

Etude #9

Herman Acke

snaar 1 en 2 open, behalve in maat 20 t/m 31
1st and 2nd string open throughout, except for bar 20 to 31

The musical score for Etude #9 is written on a single treble clef staff in A major (three sharps) and 12/8 time. The piece consists of 31 measures, with bar numbers 1, 3, 5, 7, 9, 11, 13, and 15 indicated at the start of their respective lines. The melody is primarily composed of eighth and sixteenth notes, often beamed together in groups. A first ending bracket labeled '1.' spans measures 13 through 15. The piece concludes with a double bar line and repeat dots in the final measure (measure 31).

17

2.

2

First musical staff (measures 17-19) in G major. It begins with a treble clef, a key signature of one sharp (F#), and a common time signature. The first measure contains a first ending bracket labeled '2.' The melody consists of eighth notes in a rhythmic pattern: eighth, quarter, eighth, quarter, eighth, quarter, eighth, quarter.

20

Second musical staff (measure 20) continuing the melody from the previous staff.

22

Third musical staff (measure 22) continuing the melody. The eighth-note pattern continues.

24

Fourth musical staff (measure 24) continuing the melody.

26

Fifth musical staff (measure 26) continuing the melody.

28

Sixth musical staff (measure 28) continuing the melody.

30

Seventh musical staff (measure 30) continuing the melody.

32

Eighth musical staff (measure 32) continuing the melody.

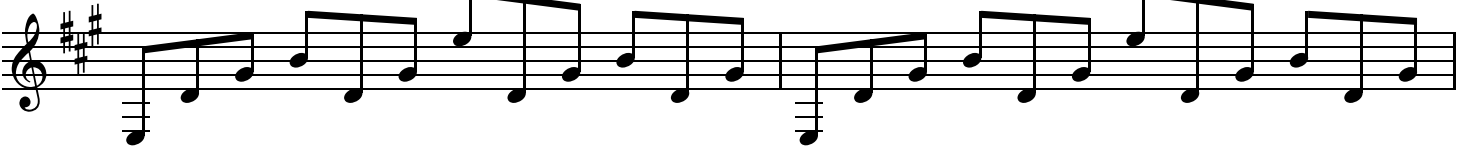
34

Ninth musical staff (measure 34) continuing the melody.

36

Tenth musical staff (measure 36) continuing the melody. The piece concludes with a double bar line.

58



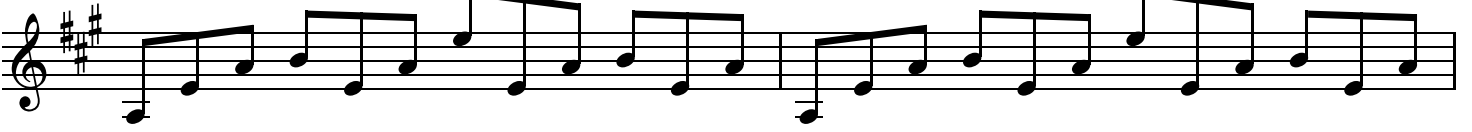
60



62



64



66



68

